

OVERPRESSURE SYSTEM DEB-3

- The DEB-3 is supplied according to ZH1/184 with the following components:
 - Housing overpressure system DEB-3 (incl. fine dust filter according to DIN 24184 and an activ coal filter according to DIN EN 141 Types: A-B-E-K-Hg)
 - Digital control unit
 - Pressure control unit
 - Airfilter
 - Blower switch
 - Air hose (5 mtr.)
 - Quick-Out frame DEB-3
 - Security lamp
 - On request assembled with a protection cage to protect your vehicle against damages and scratches
 - An air conditioningsystem can also be assembled, when it is not yet present.



Technical data:

Volt	12 or 24 V
m³/h	120 m³/h
Housing	Rustless steel
Weight	45 kg
Measures	930 x 650 x 230 mm

Art.-Nr.	Definition
18540	Overpressure system DEB-3 12V
18538	Overpressure system DEB-3 24V
18509	Maintenance with filter change incl. guarantee extension

OVERPRESSURE SYSTEM DEB-4

- The DEB-4 system, which is CE approved, is a good alternative (in spite of its small measures) for a complete security in relation to dust filtering. This system guarantees the following advantages:
 - A good price-quality proportion
 - Stable construction (rustless steel)
 - Because of its measures universally applicable
 - Easy installation
- The DEB-4 is supplied with the following components:
 - Housing DEB-4 overpressure system (incl. fine dust filter according to DIN 24184 and an activ coal filter according to DIN EN 141 Types: A-B-E-K-Hg)
 - Air hose (5 mtr.)
 - Blower switch
 - Quick-Out frame DEB-4
 - Airfilter
 - On request assembled with a protection cage to protect your vehicle against damages and scratches
 - An air conditioningsystem can also be assembled, when it is not yet present.



Technical data:

Volt	12 oder 24 V
m³/h	120 m³/h
Housing	Rustless steel
Weight	26 kg
Measures	640 x 410 x 230 mm

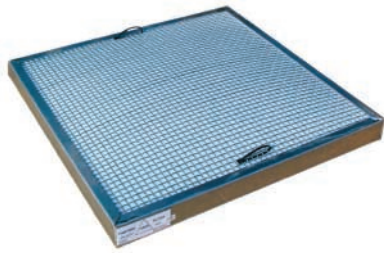
Art.-Nr.	Definition
18530	Overpressure system DEB-4 12V
18532	Overpressure system DEB-4 24V
18509	Maintenance with filter change incl. guarantee extension

Please fill out this form when information about a DEB overpressure system is needed or when you want to order:

Maschine manufacturer: _____ Mounting place: _____
 Maschine type: _____ Application area (example garbage dump): _____
 Building year: _____ Motor type: _____
 Kind of work done by the machine: _____
 Which materials must be filtered: _____
 Preferable mounting place on the machine (add picture or sheets when necessary): _____

Air conditioning present Free V-string disk for airco compressor present
 Bottom analyses present Air analyses present Pollutational substances analysis present

Art.-Nr.

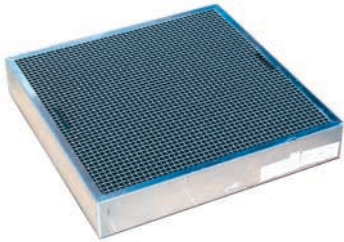


18541
18551

Type Filter Size
DEB-3 600x600x50 mm
DEB-3 600x600x60 mm

PRE-FILTER

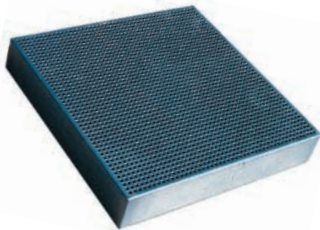
- For overpressure system DEB-3
- Aluminium case
- Fine-grained dust filter according to DIN 24184
- Coarse-grained dust filter according to DIN EN 779
- Dust class G4 / EU12
- 4,95 kg



18548

- Type • For overpressure system DEB-3
DEB-3 • Aluminium case
• Filter according to DIN EN 141
• Activated carbon type A
• 600 x 600 x 100 mm
• 7,7 kg

ACTIVATED CARBON FILTER



18550

- Type • For overpressure system DEB-3
DEB-3 • Galvanized steel case
• Filter according to DIN EN 141
• Activated carbon Typ A,B,E,K,Hg
• 600 x 600 x 100 mm
• 17,35 kg

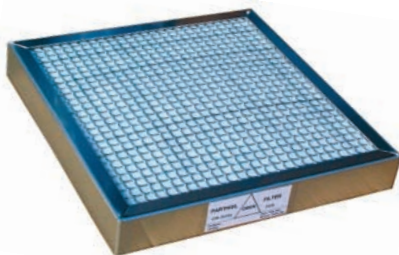
MIXED ACTIVATED CARBON FILTER



18547

- Type • For overpressure system DEB-3
DEB-3 • MDF frame with gasket
• Absolute filter according to DIN 24184
• Absolute filter class EU 12/13
• Efficiency: 0,30 µm 99,99986 % at 575 m³/h 111 Pa
• 600 x 600 x 90 mm
• 5,1 kg

ABSOLUTE FILTER

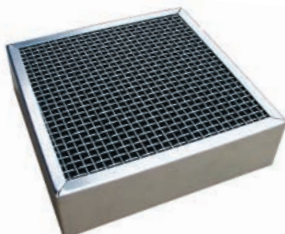


18524
18525

Type Filter Size
DEB-4 350x350x50 mm
DEB-4 350x350x60 mm

PRE-FILTER

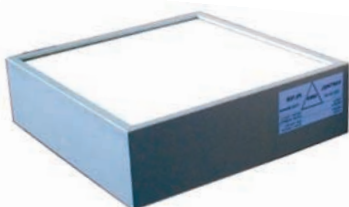
- For overpressure system DEB-4
- Aluminium case
- Fine-grained dust filter according to DIN 24184
- Coarse-grained dust filter according to DIN EN 779
- Dust class G4 / EU12
- 1,7 kg



18526

- Type • For overpressure system DEB-4
DEB-4 • Aluminium case
• Filter according to DIN EN 141
• Activated carbon Type A
• 350 x 350 x 100 mm
• 2,2 kg

ACTIVATED CARBON FILTER



18527

- Type • For overpressure system DEB-3
DEB-4 • MDF frame with gasket
• Absolute filter according to DIN 24184
• Absolute filter class EU 12/13
• Efficiency: 0,30 µm 99,99917 % at 150 m³/h 114 Pa
• 305 x 305 x 90 mm
• 1,85 kg

ABSOLUTE FILTER

Dera bv

GASFILTER FOR SEKA TYPE SDAU 50

- Aluminum housing
- Filter according to DIN EN 141
- Filter Type A, B, E, K, Hg
- 360 x 250 x 140 mm
- 3,1 kg

GASFILTER FOR SEKA, THERMTECHNIK, DREIHA, VOLVO

- Aluminum housing
- Filter according to DIN EN 141
- Filter Type A, B, E, K, Hg
- 600 x 400 x 200 mm

GASFILTER FOR BLOKSMA MAO 3/4/5/10, CORRECT = HAUSER

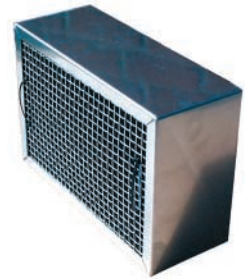
- Aluminum housing
- Filter according to DIN EN 141
- Filter Type A, B, E, K, Hg
- 600 x 400 x 200 mm

Type Measures

4/5	595 x 595 x 200 mm	18680
4/5	595 x 595 x 100 mm	18682
4/5	595 x 595 x 50 mm	18684
10	600 x 400 x 200 mm	18686
10	600 x 400 x 100 mm	18688
3	600 x 400 x 50 mm	18690

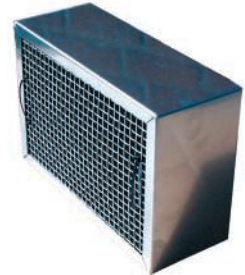
Art.-Nr.

18660



Picture can deviate from original

18670



Picture can deviate from original

18680

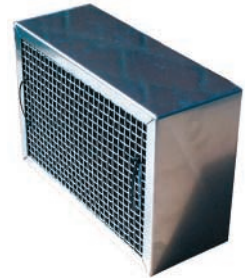
18682

18684

18686

18688

18690



Picture can deviate from original

AIR FILTER CLASS SURVEY

Filter class according to DIN EN 779 (2001)	Integral values		Old values according to			DIN 24185	Meaning
	Separation degree	Permeability	Ashrae 52-76	Eurovent 4/5	DIN 24184 DIN 3181		
G1	>65%	-	A1	EU1		-	Coarse dust filter
G2	65-80%	-	B1	EU2		-	
G3	80-90%	-	B2	EU3		-	
G4	≥90%	-	B2	EU4	P1	-	
F5	-	-	C1	EU5	-	-	Fine dust filter
F6	-	-	C2	EU6	-	-	
F7	-	-	C2	EU7	-	-	
F8	-	-	C3	EU8	-	-	
F9	-	-	-	EU9	P2	-	
EU10 = H10	85%	15%	-	-	P3	Q	Floating dust filter
EU11 = H11	95%	5%	-	-	-	R	
EU12 = H12	99,5%	0,5%	-	-	-	S	
EU13 = H13	99,95%	0,05%	-	-	-	S	
EU14 = H14	99,995%	0,005%	-	-	-	ST	
EU15 = H15	99,9995%	0,0005%	-	-	-	T	
EU16 = H16	99,99995%	0,00005%	-	-	-	U	
EU17 = H17	99,999995%	0,000005%	-	-	-	V	

We can exchange all types of filters for any brand/type overpressure system

Dera bv

Art.-Nr.

18650

/m²

COARSE FILTER CLOTH

- Low air resistance
- To use as protection for evaporators, condensers and heaters
- Complete rolls and cloths can be tailored on request



18651

/m²

COARSE FILTER CLOTH

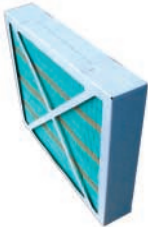
- Middle air resistance
- To use as protection for evaporators, condensers and heaters
- Complete rolls and cloths can be tailored on request



18652

PLEATED FILTER CARTRIDGE

- With paper frame
- Volvo 11007848
- 395 x 330 x 70 mm
- Interieur filter for different type machines



18653

PRE-FILTER

- Cabin air circulation or outside air filter
- Black varnished steel case with perforated sheet steel
- Extraordinary modifications for your special needs are available on request
- 300 x 200 x 40 mm
- 0,85 kg



18654

PRE-FILTER

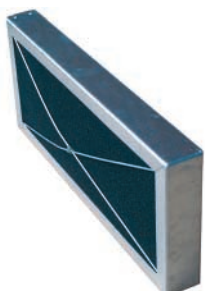
- Cabin air circulation or outside air filter
- Aluminium case with seal tape
- Fine-grained dust filter according to DIN 24184
- Dust class G4 / EU 12
- Extraordinary modifications for your special needs are available on request
- 435 x 190 x 50 mm
- 0,6 kg



18655

ACTIVATED CARBON FILTER

- Cabin air circulation or outside air filter
- Aluminium case with seal tape
- Filter according to DIN EN 141
- Activated carbon Type A
- Extraordinary modifications for your special needs are available on request
- 435 x 190 x 50 mm
- 0,6 kg



PRESSURE CONTROL

- For use with overpressure machine DEB-3 / DEB-4
- Measure range: 0-500 Pa
- Digital indicator
- Impact proof plastic housing
- CE-Norm
- 80 x 120 x 73 mm

Volt

12 18562
24 18563



CONTROL UNIT

- For use with overpressure machine DEB-3 / DEB-4
- Light indication below 100 Pa.
- Light indication above 300 Pa.
- Filter control light
- Blower switch
- Impact proof plastic housing
- CE-Norm
- 170 x 135 x 80 mm

Volt

12 18560
24 18561



BLOWER

- With built-in resistor
- 240 Watt
- 4000 RPM
- 61 db
- 2 kg

Type m³/h Volt max.A

DEB-3 1050 12 17,5 18599
DEB-3 1050 24 12,5 18600
DEB-4 850 12 17,5 18597
DEB-4 850 24 12,5 18598



FILTER CONTACT SWITCH

- For use with overpressure machine DEB-3 / DEB-4
- Contact switch for filter control light

18603



SECURITY LAMP

- For use with overpressure machine DEB-3 / DEB-4
- 5 Watt
- Impact proof plastic housing
- Splash proof
- 88 x 88 x 115 mm

Volt

12 18602
24 18596



SPARE CATCH

- For use with overpressure machine DEB-3/DEB-4
- With weld strap

18580



SEAL TAPE DEB

- Delivery as complete set

Set DEB-3 18609
Set DEB-4 18610



PVC-HOSE

- For use with overpressure machine DEB-3 / DEB-4
- Ø 100 mm
- Grey
- TBG approved

18570



FLANGED JOINT

- For use with PVC-hose Ø 100 mm
- Ø outside: 127 mm, inside: 90 mm
- Height: 25 mm

18612



HOSE CLAMP

- For use with overpressure machine DEB-3 / DEB-4
- Galvanized
- Ø 87-112 mm
- Width 25 mm

18611



Dera bv

Art.-Nr.



18512

LOOSE HOUSING DEB-3

- Rustless steel
- Standard blue RAL 5017
- Varnished on request
- 930 x 650 x 230 mm
- 27 kg



18518

LOOSE HOUSING DEB-4

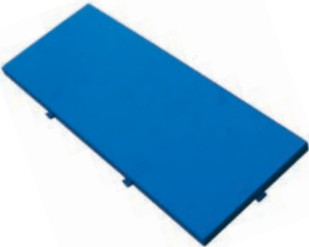
- Rustless steel
- Standard blue RAL 5017
- Varnished on request
- 640 x 410 x 230 mm
- 15 kg



18514

FILTER HOUSING TOP DEB-3

- Rustless steel
- With handles
- Standard blue RAL 5017
- Varnished on request
- 660 x 660 X 20 mm
- 8,5 kg



18516

BLOWER HOUSING TOP DEB-3

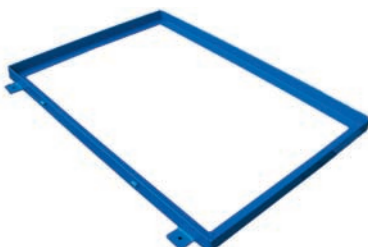
- Rustless steel
- Standard blue RAL 5017
- Varnished on request
- 660 x 265 x 20 mm
- 2 kg



18519

HOUSING TOP DEB-4

- Rustless steel
- Standard blue RAL 5017
- Varnished on request
- 640 x 410 x 20 mm
- 5 kg



QUICK-OUT FRAME

18543

Type kg • Rustless steel

18544

DEB-3 8,5 • Standard blue RAL 5017

DEB-4 6,0 • Varnished on request